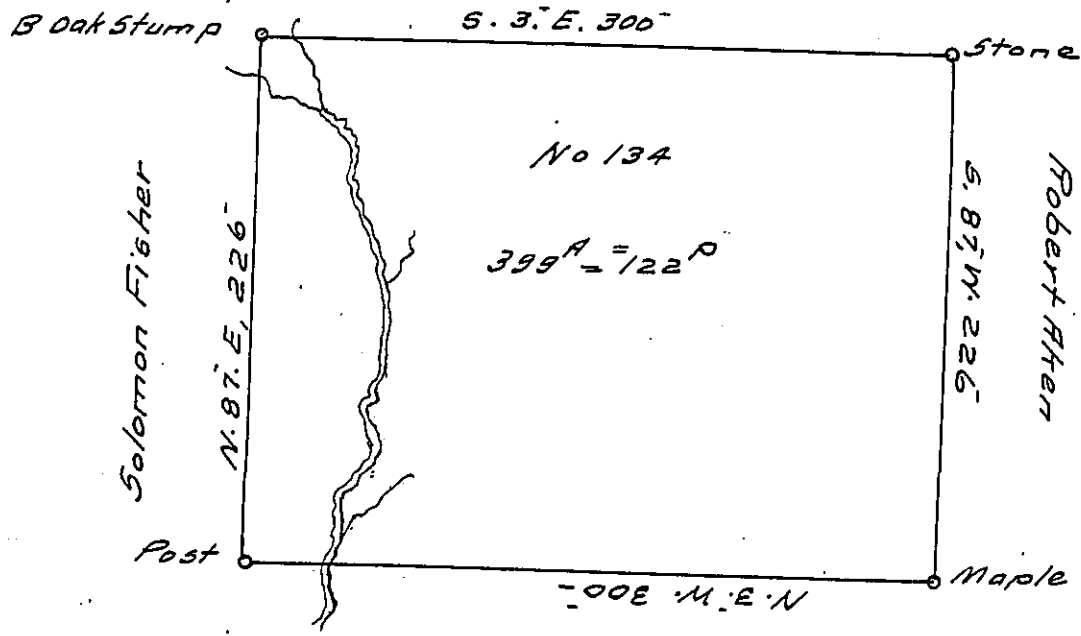


Mervin Christy & others

Butler County Line



James Stewart's heirs

The Above Draught of a Survey Executed February 23<sup>rd</sup>  
 1827 in pursuance of an Actual Resident Settlement & Improvement  
 made by Mary Sturgeon Situate in Shenango Township Beaver County  
 Containing 399 Acres 122 perch & allowance of Six Per Cent &c

R. W. Law D. S.

I R. W. Law D. S. in and for the County of Beaver do Certify  
 that the above tract of ~~land~~ was surveyed agreeable to the O-  
 riginal lines and the boundaries marked on the ground it being Num-  
 ber 13<sup>th</sup> <sup>first Donation District</sup> given under my hand the 12<sup>th</sup> day of March 1827

R. W. Law D. S.

To Gabriel Hiester Esq<sup>r</sup>  
 Surveyor General

IN TESTIMONY that the above is a copy of the original remaining on file in  
 the Department of Internal Affairs of Pennsylvania, made  
 conformably to an Act of Assembly approved the 16th day of  
 February, 1833, I have hereunto set my Hand and caused  
 the Seal of said Department to be affixed at Harrisburg,  
 this twenty-first day of December 1916.

*Henry Howell*  
 Secretary of Internal Affairs.